

Visual Rules Team Platform

Streamline Rules Development, Deployment and Reuse across Teams

Bosch Software Innovations



BOSCH
Invented for life

At a Glance

- ▶ Centralized rule repository
- ▶ User- and team-based access control
- ▶ Complex versioning made easy
- ▶ Auditing of rule changes
- ▶ Graphical compare and merge of rule models and versions
- ▶ LDAP integration
- ▶ Supports Apache Maven

Agility needs Tools

The “build for change” principle demands high agility in the application development process. At the same time, there is a strong need for processes and tools supporting collaboration and management of agile development. This support is specifically important for rules as the most dynamic and ever-changing part of applications.

Visual Rules Team Platform provides all these for your business rules needs. It lets all members of your team – business experts and IT personnel – cooperate seamlessly while ensuring security and compliance throughout the rule project lifecycle.

Simple to Use

Visual Rules Team Platform manages the simultaneous editing of rule projects by any number of Visual Rules Modelers. This happens automatically, so that working with Team Platform is very transparent to rule authors.

An elegant, consolidated view (see figure 1) lets every user see and review any changes done by another, prior to publishing these changes back to Team Platform.

Automatic locking ensures that only one user can change a specific rule at a given time. This completely eliminates the need for merging concurrent changes which often occur when using other version control systems like CVS or Subversion. Rule authors can manually lock larger parts of a rule model or even a whole project if they need to make major changes.

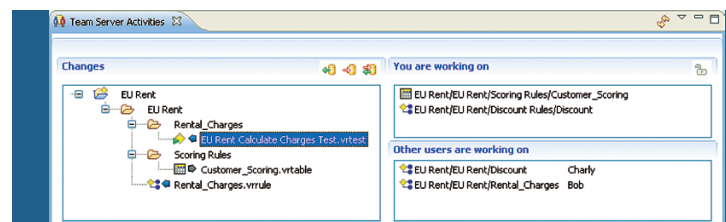
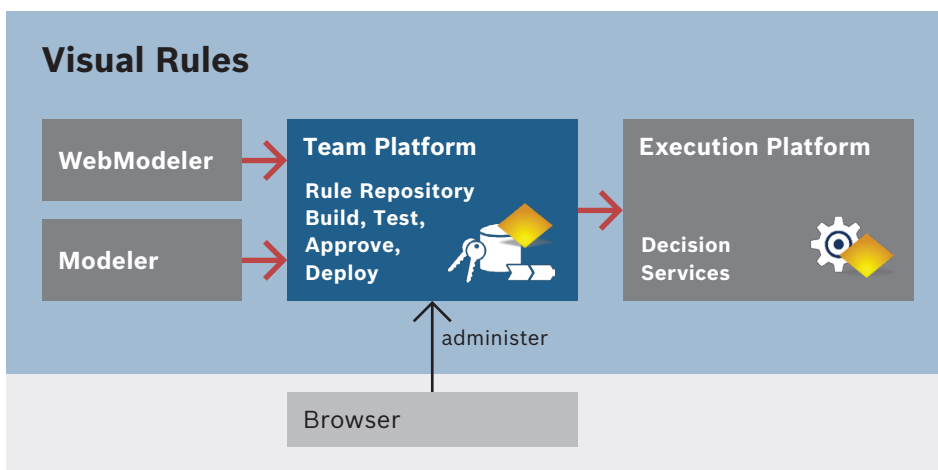


Figure 1:
View displaying rule changes of users



Versioning and Revisions

Visual Rules Team Platform keeps record of all revisions of every single part of your rule project (see figure 2). This way, you can always go back in time and review as well as recover previous revisions of individual rules, rule packages, rule models, or even whole projects.

Visual Rules Team Platform manages not only rules, but any other document or artifact that is an integral part of the project, e.g., Word documents, function libraries and, of course, rule tests.

You can create any number of snapshots of the repository content at any time. These snapshots are called versions and can be used to prepare a test and deployment phase of rule changes. Or, you can use these to kick-off parallel developments, e.g., when you start a new version of a rule base while maintaining the current rule base version in production.

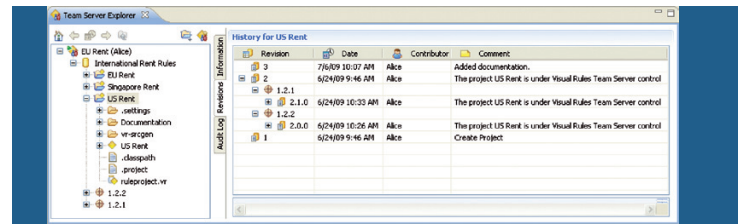
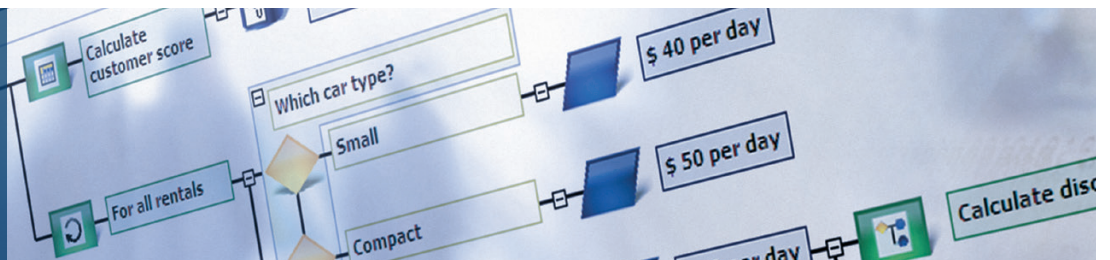


Figure 2: View displaying all revisions of a rule project

<Auditable rules/>

Deployed rules and related execution statistics can always be traced back to the exact version in the Team Platform repository. This allows reviewing and visualizing rule executions in Visual Rules Modeler, even when they happened a long time ago. This level of auditability is a critical compliance requirement in many application scenarios.

Visualize the Audit Log



Visual Rules Team Platform provides a detailed audit log of any rule repository activity. The log includes user information, date and time, affected resources, and a comment. It is also possible to display aggregated logs for changes made within projects, models, and packages.

But that's not all. From any entry in the audit log, you can launch a detailed graphical comparison (see figure 3) to easily visualize and review any changes that happened at that time. And if you want to undo all or parts of the changes, Visual Rules lets you do that, too.

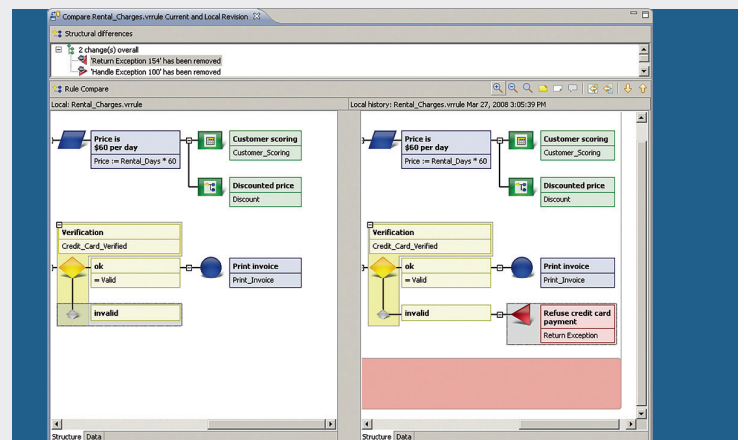


Figure 3: View for comparing different versions of a rule and visualizing changes

Team Rules

Strong Reuse Capabilities

Rules are valuable assets and you want to reuse them whenever possible. However, since rules tend to change very often and new versions are constantly created, managing this reuse across projects and teams becomes a major management effort.

Visual Rules Team Platform simplifies the management of interrelated rule projects by ensuring version consistency of dependencies during design-, build- and runtime. Visual Rules Modeler and Execution Platform follow the same versioning and reuse scheme, giving you full traceability of versions from Modeler through Team Platform to Execution Platform and back again (see figure 4).

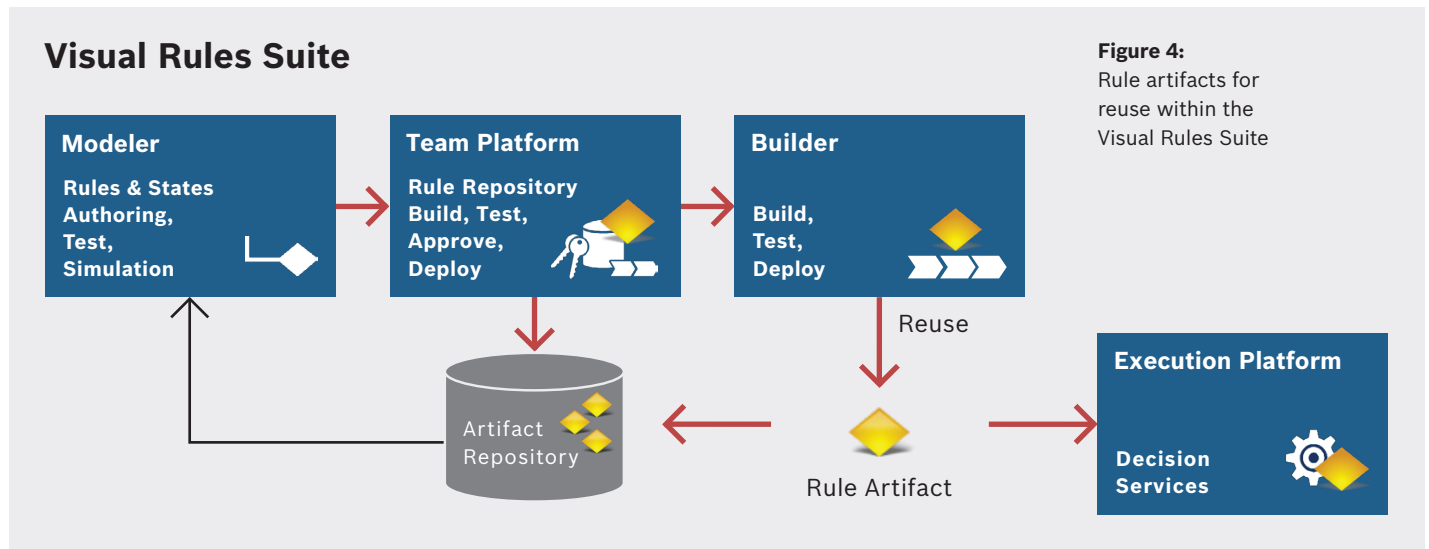


Figure 4: Rule artifacts for reuse within the Visual Rules Suite

Access Control

Visual Rules Team Platform has built-in user and team management. Permissions to view or alter repository content can be defined at many different levels. Users can be granted access to whole repositories, individual projects, folders, or only some specific rules (see figure 5).

This fine-grained access control allows managing rule visibility and also reuse across multiple teams and projects. If necessary, you can integrate existing LDAP or Active Directory servers for user authentication.

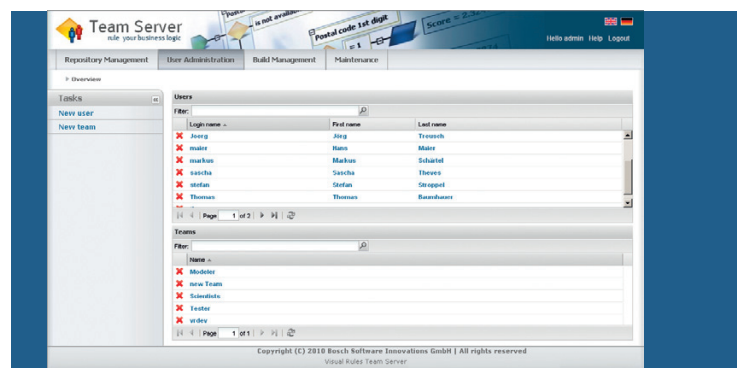


Figure 5: Web Console for administering users, teams, and access rights

Maven Integration

IT development teams, using Maven to build and assemble their applications, can leverage their existing skills and infrastructure to include business rules managed by Visual Rules Team Platform. Rule projects, models, and rule code can be packaged into artifacts (see figure 4) and published to Maven repositories.

Visual Rules Team Platform and Modeler can then use that Maven repository to resolve rule project dependencies.

Furthermore, the Visual Rules Builder tools (which are not part of Team Platform) provide Maven plug-ins for rule code generation, rule artifact packaging, and deployment. This allows seamless integration of Visual Rules into existing Maven build processes.

Visual Rules Team Platform lets Business...

- ▶ focus on writing rules and stay in sync with other team members
- ▶ reuse rules across teams
- ▶ use different versions of rules, whether in production or for test purposes
- ▶ limit access to resources if needed
- ▶ trace any rule change (who, what, when, why)
- ▶ review and approve rule changes prior to productive use
- ▶ release consolidated rules to Execution Platform

Visual Rules Team Platform lets IT...

- ▶ simplify collaboration between business and IT people by sharing rule projects and related assets
- ▶ define access rights for repositories, projects, models, packages, down to individual rules or other resource files
- ▶ integrate with LDAP/Active Directory for user authentication
- ▶ manage Team Platform through a web-based administration console
- ▶ integrate rules into Maven build processes and repositories

Bosch Software Innovations, the Software and Systems House of the Bosch Group, designs and develops innovative software and systems solutions for an international clientele. For banks and financial services providers, Bosch Software Innovations offers specialized products in the areas of compliance, risk management, and customer relationship management. Its systems solutions for mobility and energy infrastructures range from analysis and implementation up to the operation of fully integrated hardware and software systems.

We provide our customers with the support they need to develop innovative business models that interconnect functions, services, and devices via the internet. Using Bosch Software Innovations' leading technologies, customers can increase the efficiency and flexibility of complex applications to gain a long-term competitive advantage.

More information can be found at www.bosch-si.com

The **Bosch Group** is a leading global supplier of technology and services. According to preliminary figures, some 283,500 associates generated sales of 47.3 billion euros in the areas of automotive and industrial technology, consumer goods, and building technology in fiscal 2010. The Bosch Group comprises Robert Bosch GmbH and its more than 300 subsidiaries and regional companies in over 60 countries. If its sales and service partners are included, then Bosch is represented in roughly 150 countries. This worldwide development, manufacturing, and sales network is the foundation for further growth. Bosch spent some four billion euros for research and development in 2010, and applied for over 3,800 patents worldwide. With all its products and services, Bosch enhances the quality of life by providing solutions which are both innovative and beneficial.

More information can be found at www.bosch.com

Europe

Bosch Software Innovations GmbH

Ziegelei 7
88090 Immenstaad
Germany
Tel. +49 7545 202-300
Fax +49 7545 202-301
info-de@bosch-si.com
www.bosch-si.de

Americas

Bosch Software Innovations Corp.

161 N. Clark Street
Suite 4700
Chicago, Illinois 60601/USA
Tel. +1 312 523-2176
Fax +1 312 268-6286
info@bosch-si.com
www.bosch-si.com

Asia

**Bosch Software Innovations
c/o Robert Bosch (SEA) Pte Ltd**

11 Bishan Street 21
Singapore 573943
Tel. +65 6571 2220
Fax +65 6258 4671
info-sg@bosch-si.com
www.bosch-si.sg